
NetZero Explained

Setting the Scene

Our planet is warming up due to increases in greenhouse gasses which are causing climate change.

Scientists agree that limiting warming to 1.5° would reduce the worst aspects of climate change. However the best case scenario at 1.5 degrees is still pretty grim with heat waves, rising oceans and destruction of 70-90% of coral reefs.

By limiting the planet's warming to 1.5° Celsius by 2100 the hope is to stave off severe climate disruptions that will exacerbate hunger, conflict and drought world-wide.

Rises greater than 1.5° could be catastrophic.

"The alarm bells are deafening, and the evidence is irrefutable: greenhouse gas emissions from fossil fuel burning and deforestation are choking our planet and putting billions of people at immediate risk." *Antonio Guterres, Secretary-General of the UN*

COP26 – November 2021

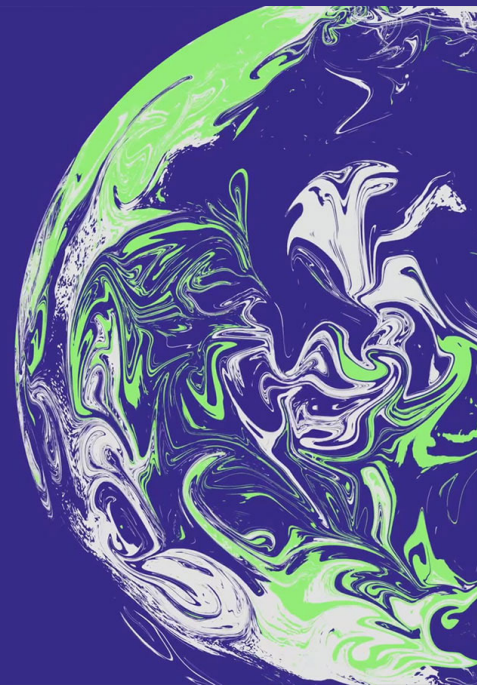
The purpose of COP26 was to strike a global climate deal aimed at reducing greenhouse-gas emissions and averting catastrophic global warming.

These pledges are NOT enough to limit a planetary temperature rise to the key 1.5 degrees Celsius threshold.

01-12 NOV 2021
GLASGOW

COP26

IN PARTNERSHIP WITH ITALY



Joining the Race to Zero

Race to Zero is a United Nations-led campaign working with businesses, cities, regions, investors, and financial and educational institutions to commit to achieve net zero carbon emissions by 2050.

Organisations must pledge to hit net zero and set a target for 50% emissions reduction by 2030.

Within a year of signing up, the pledge must be supported with a plan on how to hit those targets with follow through, action and published annual results on progress.

The logo for Race to Zero, featuring a solid blue rectangle on the left and the words "RACE TO ZERO" in a bold, blue, sans-serif font to its right.

RACE TO ZERO



Greenhouse Gasses (GHG)
are causing climate change.
What are they?

How is the UK government trying to reduce GHG emissions?

April 2019

Large UK companies required by the Department for Business, Energy and Industrial Strategy (BEIS) to report publicly on energy use and carbon emissions within their Directors' Report.

SECR (Streamlined Energy & Carbon Reporting) impacts companies that exceed at least two of the following criteria in the preceding financial year:

- *£36m Annual Turnover

- *£18m Balance Sheet Total

- *250 Employees

December 2019

The UK is the first major world economy to pass LAWS to end its contribution to global warming by 2050.

5th June 2021

World Environment Day

New UK Procurement Policy Note (PPN). Companies bidding for public contracts over £5 million per annum have to commit to net zero by 2050 and produce credible Carbon Reduction Plans (CRP) before being considered - from 30th Sept 2021.

One of the criteria for NetZero by 2050 pledge, is to halve current emissions by 50% by 2030.

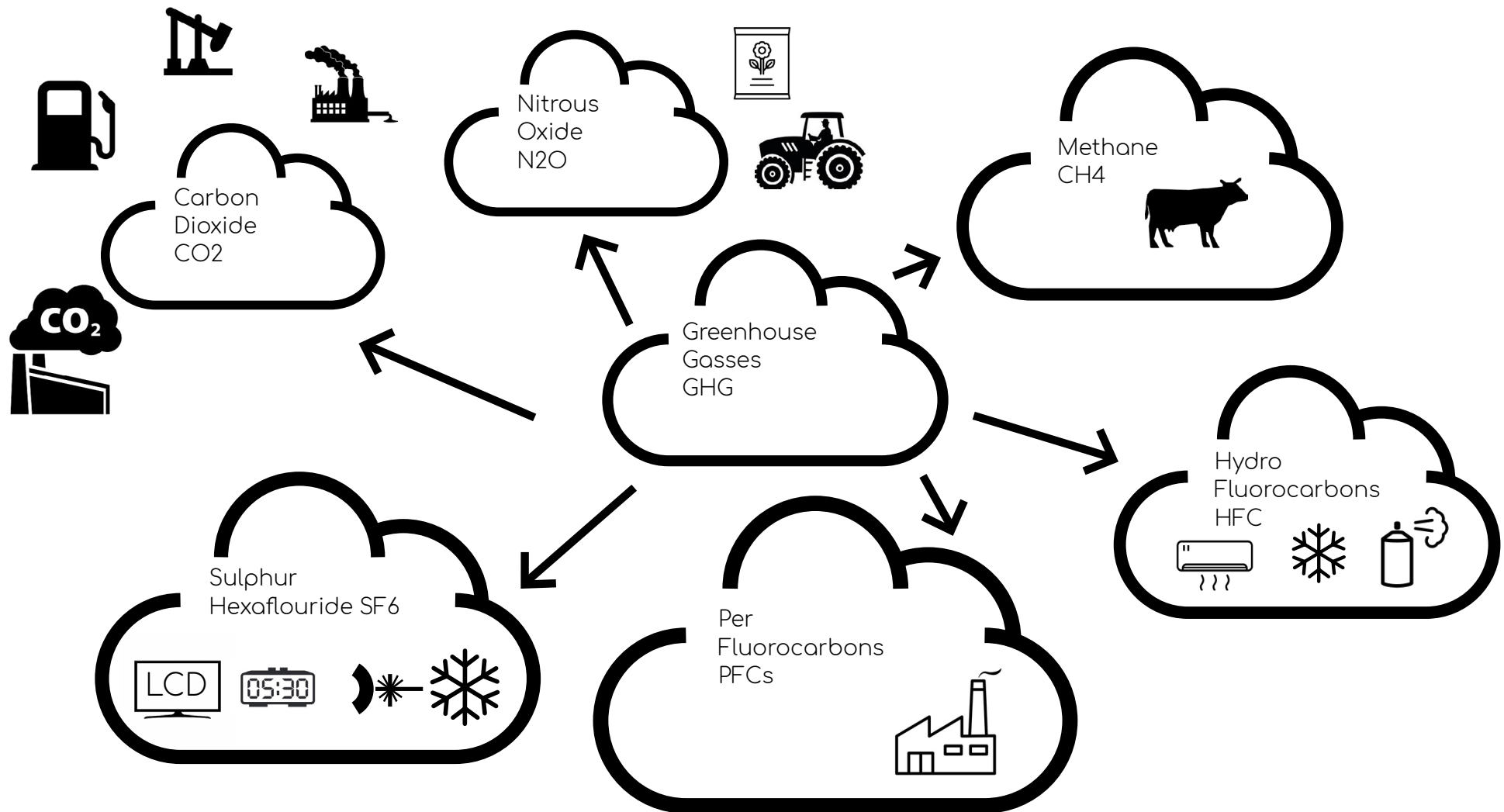
What is Greenhouse Gas?

A greenhouse gas (GHG) is any gas in the atmosphere which absorbs heat, and thereby keeps the planet's atmosphere warmer than it otherwise would be.

GHGs occur naturally in the Earth's atmosphere, but human activities, such as the burning of fossil fuels increase the levels of GHGs, causing global warming and climate change. Wealthier nations are responsible for most greenhouse gas emissions since the Industrial Revolution.

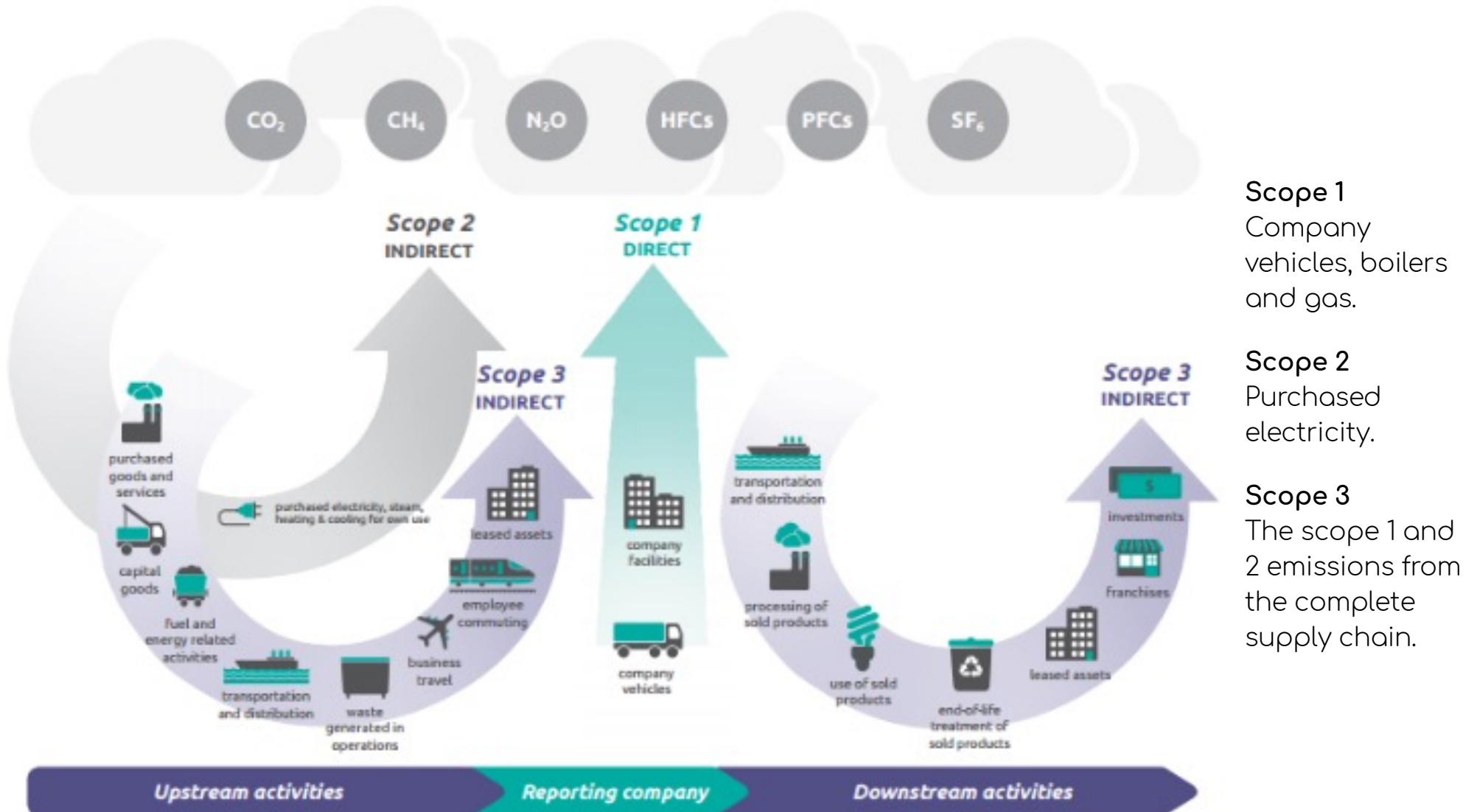
Carbon dioxide (CO₂) is the most common GHG emitted by human activities, in terms of the quantity released and the total impact on global warming. Other greenhouse gasses include:

Greenhouse Gasses



3 Types/Scopes of Greenhouse Gas Emissions

In order to reduce our GHG emissions we first need to define and measure them:



A photograph of a sophisticated indoor lounge or conservatory. The space features a high, vaulted ceiling with exposed wooden beams and a large, ornate crystal chandelier hanging from the center. Several large, mature trees in pots are scattered throughout the room, adding a natural element. The furniture includes modern, dark-framed armchairs with light-colored cushions, arranged around a large, round, dark-colored fire pit. In the background, there are more tables and chairs, and a person is visible sitting at a table on the left. The overall atmosphere is elegant and comfortable.

So how do JPA fit in to all this?
What can we do?

The challenge for SME's (Small and mid-size enterprises)

At the start of 2021 there were over 5.5 million SME's (Small and mid-size enterprises) in the UK (0-49 employees.)

SMEs account for three fifths of the employment and around half of the turnover in the UK private sector.

If SME's all measured their carbon footprint, introduced reduction targets and in the meantime off set their carbon it would be a massive shift in the UKs carbon footprint.

We can all play our part in reducing the UK's emissions.

Reducing Furniture Waste & Carbon 2022

To date, we have recycled **27,021** pieces of unwanted furniture



chairs

11,893

desks

4,562

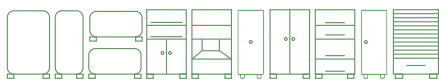
pedestals

1,487

storage

1,564

miscellaneous items

7,898This **Saved****641**landfill tons
and associated nasties**857**tons CO2e
reducing our
carbon impact

We have pledged to **Net Zero** by 2050



100%
packaging
recycled



100%
furniture supplied
recyclable



CO2
committed to local
operation to reduce
emissions



CO2 offset
scope 1 & 2
emissions measured
& offset



100%
installations
carbon neutral



4501
items rehomed in the
community to over
65 organisations



£545,000
Value of furniture
rehomed in the
community



£1.8m
savings to clients
through resource/
furniture maximisation

Achievements to date

- Signed up to UN Race to Zero. **JPA are committed to Net Zero.**
- Calculated our own operational Scope1 and 2 emissions.
- Offset these whilst working to reduce them further so our operation is Carbon Neutral.
- Committed to local operation.
- Eliminated client furniture waste- 23,346 items recycled - 546 landfill tonnes saved.
- Saved clients more than £1.5m through re-working, repair and re-using existing furniture stock.
- Re-homed over 4368 unwanted client furniture items in the community - £534K value of community savings.
- Zero landfill & zero waste.



CO₂e
Reduced
Organisation



Carbon
Neutral
Organisation

2022 Targets

- Achieve initial Scope 3 emission calculation.
- Develop road map to halving current emissions by 2030.
- Publish environmental report for all stakeholders.
- Continue to reduce carbon emissions through targets and review.
- Develop supply chain so that all timber is from managed forests.
- Work with manufacturers to drive emissions down.
- Promote circular furnishing model to all sectors.
- Put responsible production and consumption models to our clients.

**FURNITURE DESIGNED FOR YOUR LIFE
AND THE LIFE OF OUR FORESTS.
CHOOSE FSC®**

FSC® C171825



Our circular furnishing approach

- Maximises existing resources (re-use - plus repair, refresh, reconfigure).
 - Prevents unnecessary new furniture spend.
 - Improves client value and environmental performance.
 - Enables zero furniture landfill – zero waste.
 - Enables measurable landfill kg and co2e savings.
 - Is easily integrated into existing procurement processes.
 - Connects clients with community through re-homing programmes.
- Demonstrates measurable community impact and savings.
 - Raises awareness of and reduces waste.
 - Enables clients to demonstrate responsible consumption and process to stakeholders.

The Waste Hierarchy

Preferred environmental option



Least preferred environmental option

Our circular furnishing solution

Measurable Benefits

- Financial Savings – single source supply
- Environment – no waste
- Community Support
- Award Winning Innovations



Furniture Services

- Re-use
- Repair & Refresh
- Re-Working
- Re-Upholstery
- Re-Configuration
- Community Re-Homing
- Recycling for Materials Recovery
- ZERO Landfill

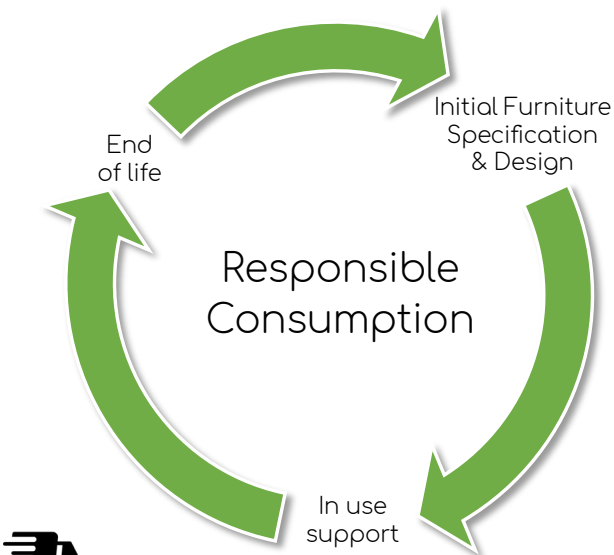


Legislation

- Supports UK Government Waste Plan
- Supports Net Zero 2050
- Supports UN SDG
- Reflects BS8001
- Supports BS8300
- Peace of Mind



- Zero Landfill
- Reduced Project Carbon Cost
- Minimal Operational Downtime
- Enhanced Reputation



Local Logistics

- Delivery & Installation
- Own Warehouse
- Own Fitting Teams
- Own Fleet
- Resources in Your Area
- Risk Mitigation
- CSCS Trained Teams
- DBS Security Check
- Low Scope 3 Emissions
- Reverse Logistics Streamlining
- Low Damage Rate
- Support Structure in Place



Sustainable Supply

- SKA & BREEAM Compliance
- Robust Warranties
- Standards Compliance
- Sustainable Supply Chain
- Responsible Consumption
- Responsible Production
- Carbon Costed
- Tailored to Each Project



Resource Maximisation

- Ongoing Maintenance
- O&M Manuals
- Warranties Underwritten
- Spare Parts Stocked
- Product Training
- Post-Occupation Support
- Ongoing Site Presence
- Optimal Operational Time

Supporting Certifications

Our activity is underpinned by benchmark certifications, public commitment, compliance, responsible procurement and consumption.



BSI ISO 9001:2015 Quality Management Certificate No. FM8443.



BSI ISO 14001:2015 Environmental Management Certificate No. EMS547673.



Supply Chain Sustainability School Green Member.



FISP Furniture Industry Sustainability Programme, Certificate No. 75.



Upper tier waste carrier and broker License No. CBDU203549.



CSCS Construction Skills Certification Scheme.



FIRA Furniture Industry Research Association Certificate No. 000883.



Constructionline Silver Member Registration No. 165294.



CHAS Contractors Health & Safety Assessment Scheme.



Promoting responsible management of the world's forests.

External recognition - don't just take our word for it



Contacts

Fiona Edwards

Head of Sustainability

f.edwards@jpa-workspaces.com

Richard Cooksey

Chief Operating Officer

r.cooksey@jpa-workspaces.com

Help Team

hello@jpa-workspaces.com

+44 (0)1727 840800

